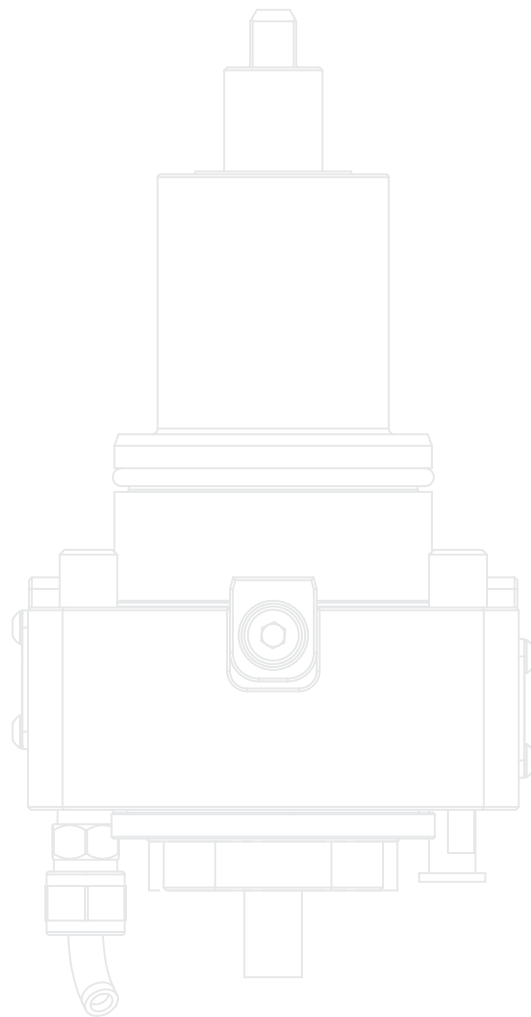


BMT

車銑複合機刀座
Driven & Static Tool Holder



KOREAN BMT

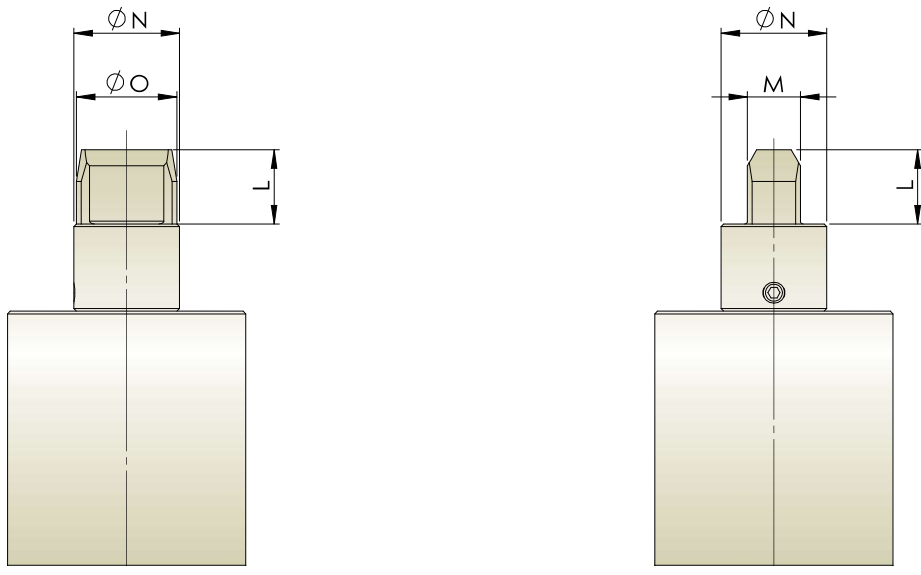


DOOSAN
HWACHEON
HYUNDAI
SAMSUNG

Driven & Static Tool Holder



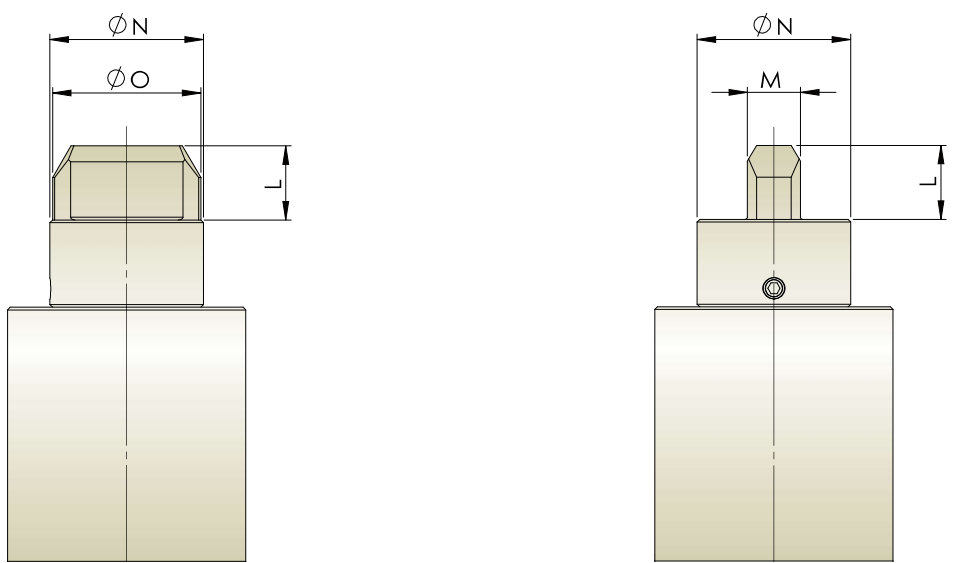
A Type



Unit : mm

	M	N	O	L
BMT55	8	17	16	10
BMT65	10	20	19	14
BMT75	14	23	22	15
BMT85	16	27.5	26	20

C Type



Unit : mm

	M	N	O	L
BMT55	8	29	28	10
BMT65	10	29	28	14
BMT75	14	38	35	15

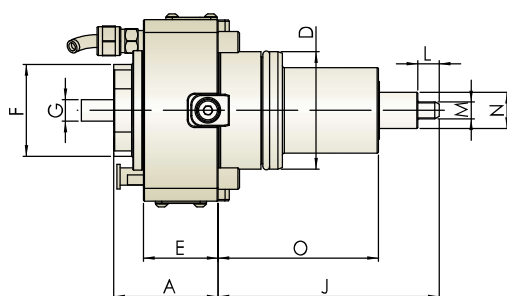
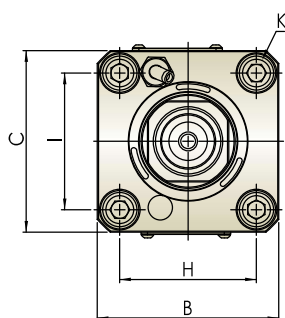


Axial Tool Holder 軸向內牙動力刀座

External Coolant
外部出水

	R.P.M. Max. 轉速最高	6,000 RPM		Rotation 轉向	
---	---------------------	-----------	---	----------------	---

- Driven Coupling is according to DIN 1809.
- ER Collet is according to DIN 6499.
- 傳動軸為1809
- 輸出軸筒夾為DIN 6499



Unit : mm

Model NO.	A	B	C	D	E	F	G	H	I	J	K	L	M	N	O	N.W.(KG)
THM-A11-45A	55	75	75	45	42.5	43	ER25(2~16)	58	58	84	M8	8	6	13	60	2.5
THM-A11-55A	49	85	85	55	35	43	ER25(2~16)	64	64	103.5	M10	10	8	17	75	3
THM-A12-65A	60	94	94	65	48	54	ER32(3~20)	70	73	111.5	M12	14	10	20	81	4.4
THM-A13-75A	74	112	112	75	51	69	ER40(4~26)	90	90	110	M12	15	14	23	76	7.4
THM-A11-55C	49	85	85	55	35	43	ER25(2~16)	64	64	103.5	M10	10	8	28	75	3
THM-A12-65C	60	94	94	65	48	54	ER32(3~20)	70	73	111.5	M12	14	10	28	81	4.4
THM-A13-75C	74	112	112	75	51	69	ER40(4~26)	90	90	110	M12	15	14	38	76	7.4

※ 內牙扳手為選購配件，詳細規格請見 P82。ER wrench is not included and its specification is shown on P82.

Driven & Static Tool Holder

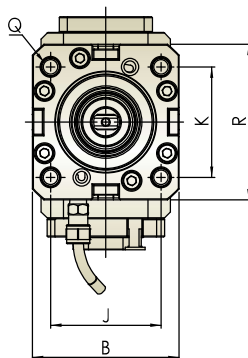
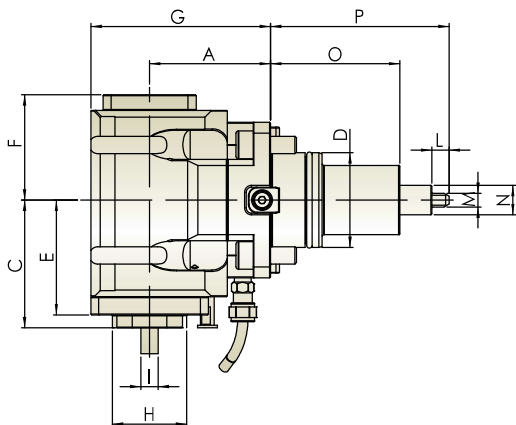


Radial Tool Holder 徑向內牙動力刀座

External Coolant
外部出水

	R.P.M. Max. 轉速最高	4,000 RPM		Gear Ratio 齒輪比	1 : 1		Rotation 轉向		IN OUT
--	---------------------	-----------	--	-------------------	-------	--	----------------	--	--------

- Driven Coupling is according to DIN 1809.
- ER Collet is according to DIN 6499.
- 傳動軸為1809
- 輸出軸筒夾為DIN 6499



Unit : mm

Model NO.	A	B	C	D	E	F	G	H	I	J	K	L	M	N	O	P	Q	R	N.W.(KG)
THM-V11.65-45A	65	75	74	45	55.5	50	95	43	ER25(2~16)	58	58	8	6	13	60	84	M8	75	5.3
THM-V11.70-55A	70	85	74	55	66.5	61	104	43	ER25(2~16)	64	64	10	8	17	75	103.5	M10	90	6.8
THM-V11.85-55A	85	85	74	55	66.5	61	119	43	ER25(2~16)	64	64	10	8	17	75	103.5	M10	90	7.6
THM-V12.72-65A	72	94	88	65	75.5	64.5	110	54	ER32(3~20)	73	70	14	10	20	81	111.5	M12	98	8.8
THM-V12.100-65A	100	94	88	65	75.5	64.5	138	54	ER32(3~20)	73	70	14	10	20	81	111.5	M12	98	10
THM-V13.60-75A	60	112	98	75	76.5	72.5	107	69	ER40(4~26)	90	90	15	14	23	76	110	M12	122	14
THM-V13.90-75A	90	112	98	75	76.5	72.5	137	69	ER40(4~26)	90	90	15	14	23	76	110	M12	122	16.9
THM-V11.70-55C	70	85	74	55	66.5	61	104	43	ER25(2~16)	64	64	10	8	28	75	103.5	M10	90	6.8
THM-V11.85-55C	85	85	74	55	66.5	61	119	43	ER25(2~16)	64	64	10	8	28	75	103.5	M10	90	7.7
THM-V12.72-65C	72	94	88	65	75.5	64.5	110	54	ER32(3~20)	73	70	14	10	28	81	111.5	M12	98	8.9
THM-V12.100-65C	100	94	88	65	75.5	64.5	138	54	ER32(3~20)	73	70	14	10	28	81	111.5	M12	98	10.1
THM-V13.60-75C	60	112	98	75	76.5	72.5	107	69	ER40(4~26)	90	90	15	14	38	76	110	M12	122	14
THM-V13.90-75C	90	112	98	75	76.5	72.5	137	69	ER40(4~26)	90	90	15	14	38	76	110	M12	122	16.9

※ 內牙扳手為選購配件，詳細規格請見 P82。 ER wrench is not included and its specification is shown on P82.

※ 另有 6000RPM 可供選擇 Further option : 6000RPM

Driven & Static Tool Holder

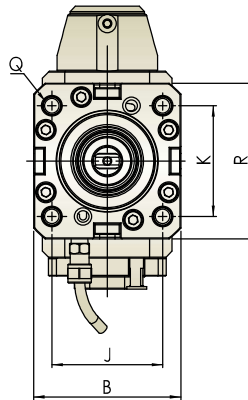
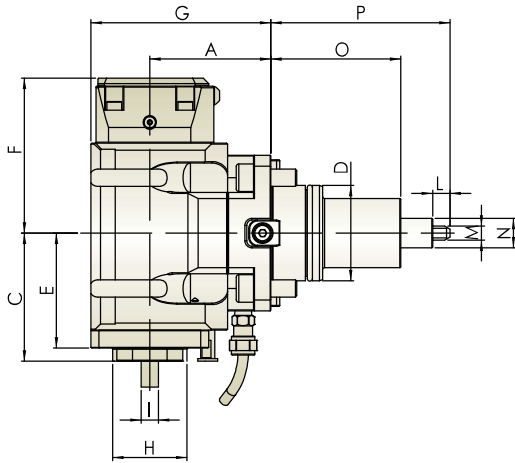


Radial Tool Holder 徑向內牙動力刀座

Internal Coolant
中心出水

R.P.M. Max. 轉速最高	4,000 RPM	Gear Ratio 齒輪比	1:1	Internal Coolant 中心冷卻出水	30 bar	Rotation 轉向	
---------------------	-----------	-------------------	-----	----------------------------	--------	----------------	--

- Driven Coupling is according to DIN 1809.
- ER Collet is according to DIN 6499.
- 傳動軸為1809
- 輸出軸筒夾為DIN 6499



Unit : mm

Model NO.	A	B	C	D	E	F	G	H	I	J	K	L	M	N	O	P	Q	R	N.W.(KG)
THM-V11.70-55AI	70	85	74	55	66.5	89.5	104	43	ER25(2~16)	64	64	10	8	17	75	103.5	M10	90	7.5
THM-V11.85-55AI	85	85	74	55	66.5	89.5	119	43	ER25(2~16)	64	64	10	8	17	75	103.5	M10	90	8.3
THM-V12.72-65AI	72	94	88	65	75.5	93	110	54	ER32(3~20)	73	70	14	10	20	81	111.5	M12	98	9.2
THM-V12.100-65AI	100	94	88	65	75.5	93	138	54	ER32(3~20)	73	70	14	10	20	81	111.5	M12	98	10.7
THM-V13.60-75AI	60	112	98	75	76.5	106	107	69	ER40(4~26)	90	90	15	14	23	76	110	M12	122	15.2
THM-V13.90-75AI	90	112	98	75	76.5	106	137	69	ER40(4~26)	90	90	15	14	23	76	110	M12	122	18.1
THM-V11.70-55CI	70	85	74	55	66.5	89.5	104	43	ER25(2~16)	64	64	10	8	28	75	103.5	M10	90	7.5
THM-V11.85-55CI	85	85	74	55	66.5	89.5	119	43	ER25(2~16)	64	64	10	8	28	75	103.5	M10	90	8.3
THM-V12.72-65CI	72	94	88	65	75.5	93	110	54	ER32(3~20)	73	70	14	10	28	81	111.5	M12	98	9.3
THM-V12.100-65CI	100	94	88	65	75.5	93	138	54	ER32(3~20)	73	70	14	10	28	81	111.5	M12	98	10.8
THM-V13.60-75CI	60	112	98	75	76.5	106	107	69	ER40(4~26)	90	90	15	14	38	76	110	M12	122	15.2
THM-V13.90-75CI	90	112	98	75	76.5	106	137	69	ER40(4~26)	90	90	15	14	38	76	110	M12	122	18.1

※ 內牙扳手為選購配件，詳細規格請見 P82。ER wrench is not included and its specification is shown on P82.

※ 另有 6000RPM 可供選擇 Further option : 6000RPM

Driven & Static Tool Holder

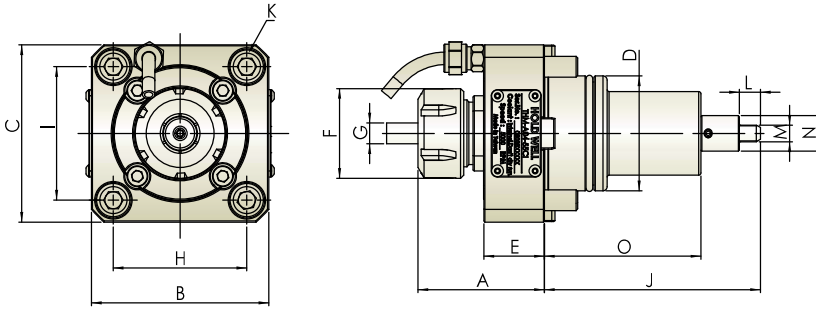


Axial Tool Holder 軸向動力刀座

External Coolant
外部出水

R.P.M. Max. 轉速最高 **6,000 RPM**
 Rotation 轉向

- Driven Coupling is according to DIN 1809. ● 傳動軸為1809
- ER Collet is according to DIN 6499. ● 輸出軸筒夾為DIN 6499



Unit : mm

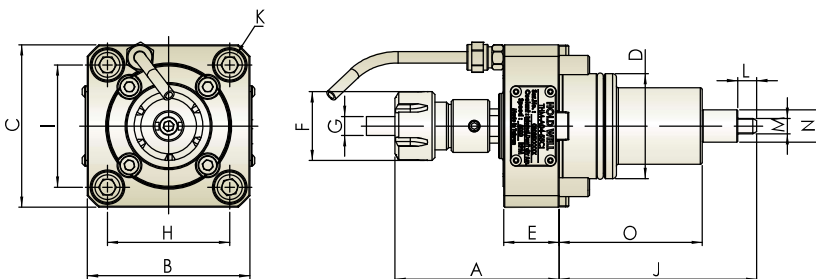
Model NO.	A max	B	C	D	E	F	G	H	I	J	K	L	M	N	O	N.W.(KG)
THM-A04-55A	60.7	85	85	55	29	43	ER25(2~16)	64	64	103.5	M10	10	8	17	75	2.6
THM-A05-65A	69	94	94	65	30	50	ER32(3~20)	73	70	111.5	M12	14	10	20	81	3.5
THM-A06-75A	80	112	112	75	30	63	ER40(4~26)	90	90	110	M12	15	14	23	80	5.5
THM-A07-85A	108	125	125	85	44	78	ER50(12~34)	100	100	140	M12	20	16	27.5	100	10.9
THM-A04-55C	60.7	85	85	55	29	43	ER25(2~16)	64	64	103.5	M10	10	8	28	75	2.7
THM-A05-65C	69	94	94	65	30	50	ER32(3~20)	73	70	111.5	M12	14	10	28	81	3.6

Axial Tapping Tool Holder 軸向攻牙動力刀座

External Coolant
外部出水

R.P.M. Max. 轉速最高 **3,000 RPM**
 Rotation 轉向

- Driven Coupling is according to DIN 1809. ● 傳動軸為1809
- ER Collet is according to DIN 6499. ● 輸出軸筒夾為DIN 6499



Unit : mm

Model NO.	A max	B	C	D	E	F	G	H	I	J	K	L	M	N	O	N.W.(KG)
THM-A15-55A	86	85	85	55	29	36	M3~M12	64	64	103.5	M10	10	8	17	75	2.8
THM-A15-55C	86	85	85	55	29	36	M3~M12	64	64	103.5	M10	10	8	28	75	2.8

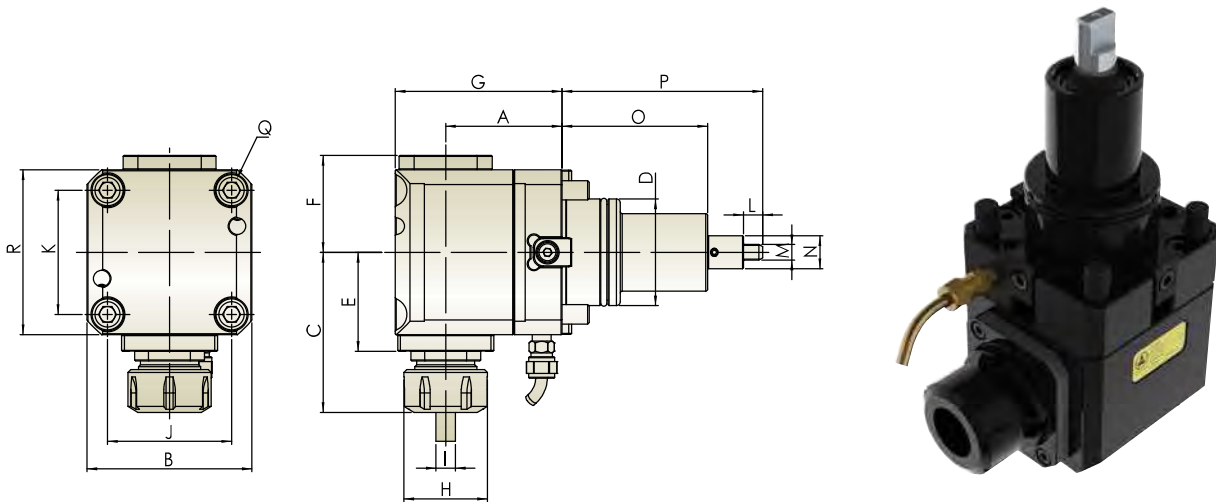
Driven & Static Tool Holder



Radial Tool Holder 徑向動力刀座

External Coolant
外部出水

 Gear Ratio 齒輪比	1 : 1	 R.P.M. Max. 轉速最高	4,000 RPM
---	-------	---	-----------



Unit : mm

Model NO.	A	B	C max	D	E	F	G	H	I	J	K	L	M	N	O	P	Q	R	N.W.(KG)
THM-B04.60-55A	60	85	82.5	55	51	50	86	43	ER25(2~16)	64	64	10	8	17	75	103.5	M10	85	5.6
THM-B04.70-55A	70	85	82.5	55	51	50	96	43	ER25(2~16)	64	64	10	8	17	75	103.5	M10	85	6.1
THM-B04.85-55A	85	85	82.5	55	51	50	111	43	ER25(2~16)	64	64	10	8	17	75	103.5	M10	85	6.9
THM-B05.72-65A	72	94	92.5	65	56	54.5	108	50	ER32(3~20)	73	70	14	10	20	81	111.5	M12	94	8.4
THM-B05.100-65A	100	94	92.5	65	56	54.5	136	50	ER32(3~20)	73	70	14	10	20	81	111.5	M12	94	10.2
THM-B06.60-75A	60	112	106	75	63	65	105	63	ER40(4~26)	90	90	15	14	23	80	110	M12	112	11.7
THM-B06.90-75A	90	112	106	75	63	65	135	63	ER40(4~26)	90	90	15	14	23	80	110	M12	112	14.2
THM-B06.125-75A	125	112	106	75	63	65	170	63	ER40(4~26)	90	90	15	14	23	80	110	M12	112	17.6
THM-B07.110-85A	110	125	134.8	85	80.5	75.5	160	78	ER50(12~34)	100	100	20	16	27.5	100	140	M12	132	23.4
THM-B04.60-55C	60	85	82.5	55	51	50	86	43	ER25(2~16)	64	64	10	8	28	75	103.5	M10	85	5.7
THM-B04.70-55C	70	85	82.5	55	51	50	96	43	ER25(2~16)	64	64	10	8	28	75	103.5	M10	85	6.2
THM-B04.85-55C	85	85	82.5	55	51	50	111	43	ER25(2~16)	64	64	10	8	28	75	103.5	M10	85	7
THM-B05.72-65C	72	94	92.5	65	56	54.5	108	50	ER32(3~20)	73	70	14	10	28	81	111.5	M12	94	8.5
THM-B05.100-65C	100	94	92.5	65	56	54.5	136	50	ER32(3~20)	73	70	14	10	28	81	111.5	M12	94	10.3



Unit : mm

Model NO.	A	B	C max	D	E	F	G	H	I	J	K	L	M	N	O	P	Q	R	N.W.(KG)
THM-V04.60-55A	60	85	86	55	56	50	91	42	ER25(2~16)	64	64	10	8	17	75	103.5	M10	85	6
THM-V04.60-55C	60	85	86	55	56	50	91	42	ER25(2~16)	64	64	10	8	28	75	103.5	M10	85	6
THM-V05.72-65C	72	94	97.2	65	62.5	56	109.5	50	ER32(3~20)	73	70	14	10	28	81	111.5	M12	94	7.6

※ 另有 6000RPM 可供選擇 Further option : 6000RPM

Driven & Static Tool Holder

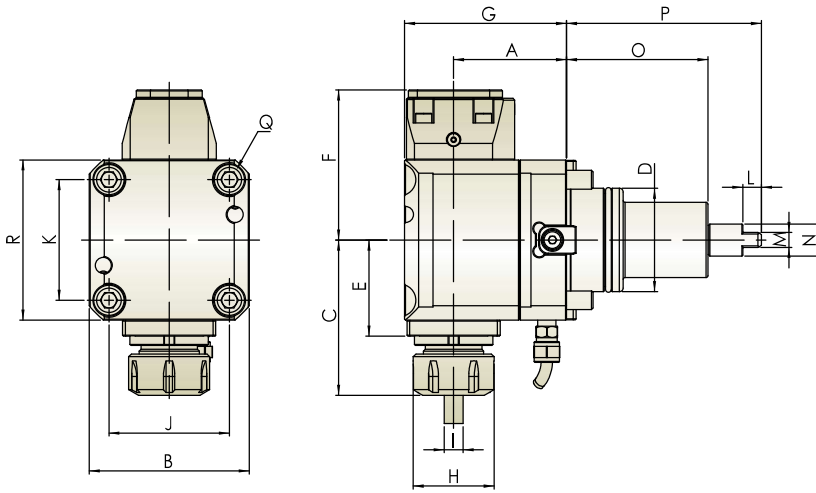


Radial Tool Holder 徑向動力刀座

Internal Coolant
中心出水

Gear Ratio 齒輪比	1 : 1	R.P.M. Max. 轉速最高	4,000 RPM	Internal Coolant 中心冷卻出水	30 bar
-------------------	-------	---------------------	-----------	----------------------------	--------

- Driven Coupling is according to DIN 1809. • 傳動軸為1809
- ER Collet is according to DIN 6499. • 輸出軸筒夾為DIN 6499



Unit : mm

Model NO.	A	B	C max	D	E	F	G	H	I	J	K	L	M	N	O	P	Q	R	N.W.(KG)
THM-B04.60-55AI	60	85	82.5	55	51	79.7	86	43	ER25(2~16)	64	64	10	8	17	75	103.5	M10	85	6
THM-B04.70-55AI	70	85	82.5	55	51	79.7	96	43	ER25(2~16)	64	64	10	8	17	75	103.5	M10	85	6.6
THM-B04.85-55AI	85	85	82.5	55	51	79.7	111	43	ER25(2~16)	64	64	10	8	17	75	103.5	M10	85	7.5
THM-B05.72-65AI	72	94	92.5	65	56	84.2	108	50	ER32(3~20)	73	70	14	10	20	81	111.5	M12	94	9
THM-B05.100-65AI	100	94	92.5	65	56	84.2	136	50	ER32(3~20)	73	70	14	10	20	81	111.5	M12	94	10.9
THM-B06.60-75AI	60	112	106	75	63	93.5	105	63	ER40(4~26)	90	90	15	14	23	80	110	M12	112	12.3
THM-B06.90-75AI	90	112	106	75	63	93.5	135	63	ER40(4~26)	90	90	15	14	23	80	110	M12	112	14.8
THM-B04.60-55CI	60	85	82.5	55	51	79.7	86	43	ER25(2~16)	64	64	10	8	28	75	103.5	M10	85	6.1
THM-B04.70-55CI	70	85	82.5	55	51	79.7	96	43	ER25(2~16)	64	64	10	8	28	75	103.5	M10	85	6.6
THM-B04.85-55CI	85	85	82.5	55	51	79.7	111	43	ER25(2~16)	64	64	10	8	28	75	103.5	M10	85	7.5
THM-B05.72-65CI	72	94	92.5	65	56	84.2	108	50	ER32(3~20)	73	70	14	10	28	81	111.5	M12	94	9
THM-B05.100-65CI	100	94	92.5	65	56	84.2	136	50	ER32(3~20)	73	70	14	10	28	81	111.5	M12	94	10.9



Unit : mm

Model NO.	A	B	C max	D	E	F	G	H	I	J	K	L	M	N	O	P	Q	R	N.W.(KG)
THM-V04.60-55AI	60	85	86	55	56	79.7	91	42	ER25(2~16)	64	64	10	8	17	75	103.5	M10	85	6.5
THM-V04.60-55CI	60	85	86	55	56	79.7	91	42	ER25(2~16)	64	64	10	8	28	75	103.5	M10	85	6.5
THM-V05.72-65CI	72	94	97.2	65	62.5	84.5	109.5	50	ER32(3~20)	73	70	14	10	28	81	111.5	M12	94	8.4

※ 另有 6000RPM 可供選擇 Further option : 6000RPM

Driven & Static Tool Holder

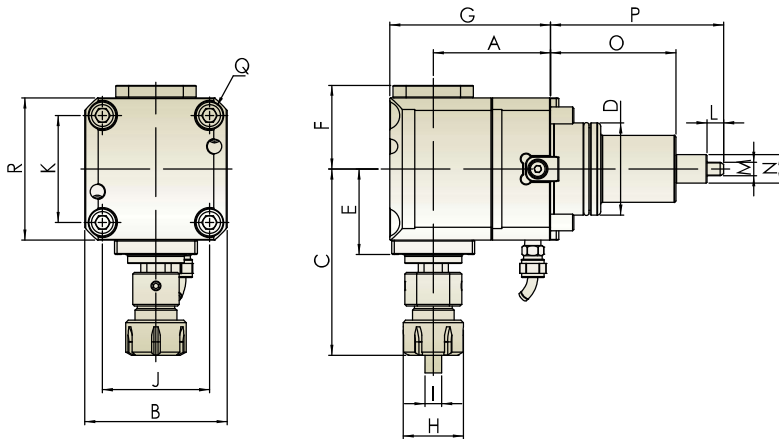


Radial Tapping Tool Holder 徑向攻牙動力刀座

External Coolant
外部出水

Gear Ratio 齒輪比 1:1
 R.P.M. Max. 轉速最高 3,000 RPM
 Rotation 轉向

- Driven Coupling is according to DIN 1809. • 傳動軸為1809
- ER Collet is according to DIN 6499. • 輸出軸筒夾為DIN 6499



Unit : mm

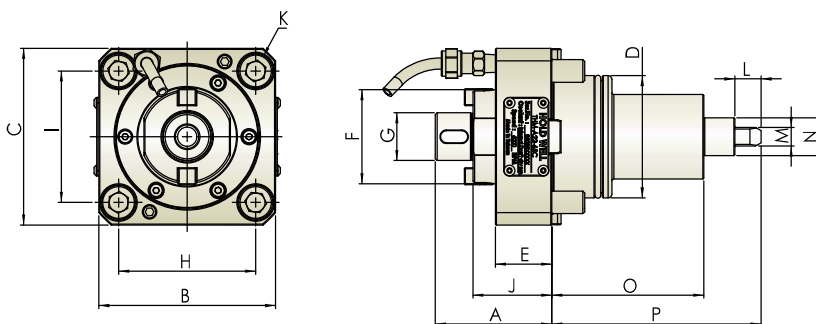
Model NO.	A	B	C max	D	E	F	G	H	I	J	K	L	M	N	O	P	Q	R	N.W.(KG)
THM-B15.70-55A	70	85	111.5	55	51	50	96	36	M3~M12	64	64	10	8	17	75	103.5	M10	85	6.2
THM-B15.70-55C	70	85	111.5	55	51	50	96	36	M3~M12	64	64	10	8	28	75	103.5	M10	85	6.3

Axial Face Mill Tool Holder 軸向面銑動力刀座

External Coolant
外部出水

R.P.M. Max. 轉速最高 6,000 RPM
 Rotation 轉向

- Driven Coupling is according to DIN 1809. • 傳動軸為1809



Unit : mm

Model NO.	A	B	C	D	E	F	G	H	I	J	K	L	M	N	O	P	N.W.(KG)
THM-A22.65A	62	94	94	65	30	50	25.4	73	70	42	M12	14	10	20	81	111.5	3.6
THM-A22.65C	62	94	94	65	30	50	25.4	73	70	42	M12	14	10	28	81	111.5	3.7

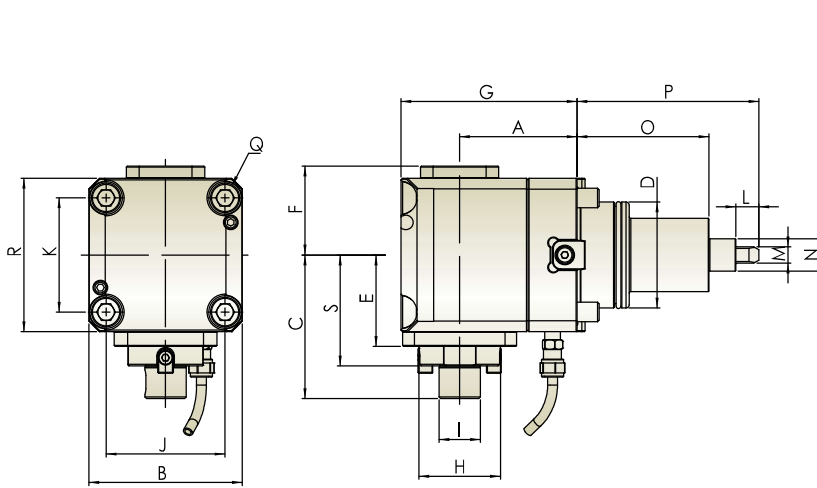
Driven & Static Tool Holder



Radial Face Mill Tool Holder 徑向面銑動力刀座

External Coolant
外部出水

Gear Ratio 齒輪比 1:1
 R.P.M. Max. 轉速最高 4,000 RPM
 Rotation 轉向



Unit : mm

Model NO.	A	B	C	D	E	F	G	H	I	J	K	L	M	N	O	P	Q	R	S	N.W.(KG)
THM-B22.72-65A	72	94	88	65	56	54.5	108	50	25.4	73	70	14	10	20	81	111.5	M12	94	68	8.4
THM-B22.72-65C	72	94	88	65	56	54.5	108	50	25.4	73	70	14	10	28	81	111.5	M12	94	68	8.5

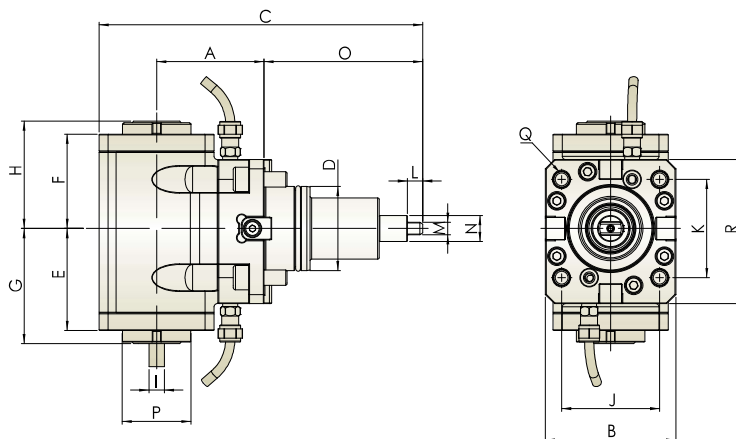
※ 另有 6000RPM 可供選擇 Further option : 6000RPM

Radial Female Thread Double Head Tool Holder 徑向雙頭動力刀座

External Coolant
外部出水

Gear Ratio 齒輪比 1:1
 R.P.M. Max. 轉速最高 4,000 RPM
 Rotation 轉向

- Driven Coupling is according to DIN 1809. ● 傳動軸為1809
- ER Collet is according to DIN 6499. ● 輸出軸筒夾為DIN 6499



Unit : mm

Model NO.	A	B	C max	D	E	F	G	H	I	J	K	L	M	N	O	P	Q	R	N.W.(KG)
THM-H11.70-55A	70	85	211	55	66.5	61.5	75	70	ER25(2~16)	64	64	10	8	17	44.94	M10	103.5	94	7.2
THM-H12.72-65A	72	94	221	65	76.5	67.5	86	77	ER32(3~20)	73	70	14	10	20	52	M12	111.5	94	8.3
THM-H11.70-55C	70	85	211	55	66.5	61.5	75	70	ER25(2~16)	64	64	10	8	28	44.94	M10	103.5	94	7.3
THM-H12.72-65C	72	94	221	65	76.5	67.5	86	77	ER32(3~20)	73	70	14	10	28	52	M12	111.5	94	8.4

※ 內牙扳手為選購配件，詳細規格請見 P82。 ER wrench is not included and its specification is shown on P82.

※ 另有 6000RPM 可供選擇 Further option : 6000RPM

Driven & Static Tool Holder

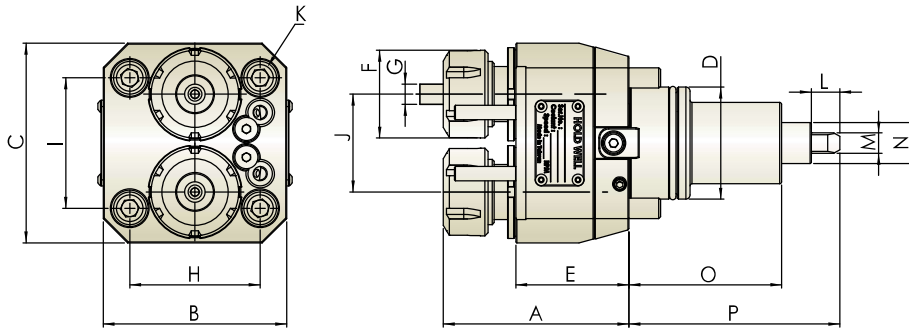


Axial Single-End Dual Output Tool Holder 軸向雙軸動力刀座

External Coolant
外部出水

R.P.M. Max. 轉速最高 **6,000 RPM**
 Rotation 轉向

- Driven Coupling is according to DIN 1809. • 傳動軸為1809
- ER Collet is according to DIN 6499. • 輸出軸筒夾為DIN 6499



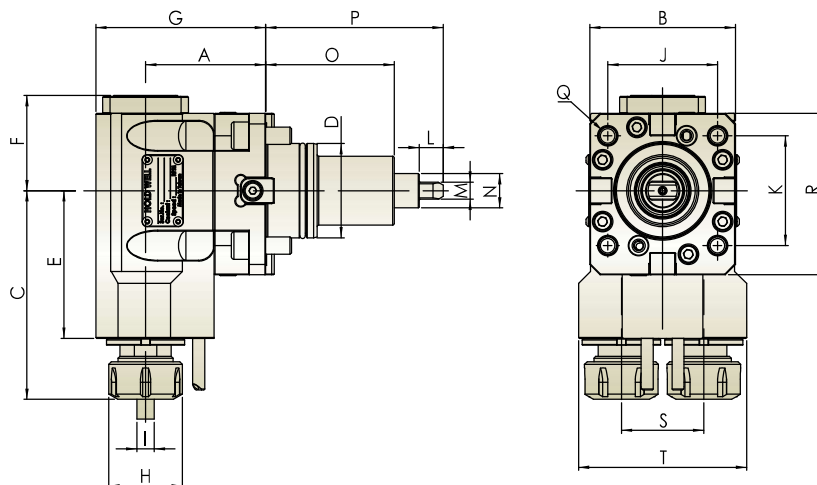
Unit : mm

Model NO.	A max	B	C	D	E	F	G	H	I	J	K	L	M	N	O	N.W.(KG)
THM-L04.48-55A	91.1	90	98	55	55.5	43	ER25(2~16)	64	64	48	M10	10	8	17	75	4.6
THM-L04.48-55C	91.1	90	98	55	55.5	43	ER25(2~16)	64	64	48	M10	10	8	28	75	4.6

Radial Single-End Dual Output Tool Holder 徑向雙軸動力刀座

External Coolant
外部出水

Gear Ratio 齒輪比 **1:1**
 R.P.M. Max. 轉速最高 **4,000 RPM**
 Rotation 轉向



Unit : mm

Model NO.	A	B	C max	D	E	F	G	H	I	J	K	L	M	N	O	P	Q	R	S	T	N.W.(KG)
THM-M04.7048-55A	70	85	121.6	55	86	55.5	99	46	ER25(2~16)	64	64	10	8	17	75	103.5	M10	94	48	98	7.7
THM-M04.7048-55C	70	85	121.6	55	86	55.5	99	46	ER25(2~16)	64	64	10	8	28	75	103.5	M10	94	48	98	7.7

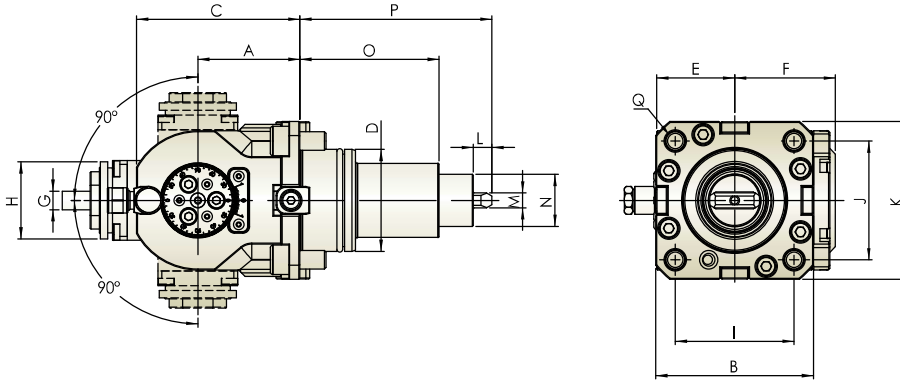
Driven & Static Tool Holder



Angle Adjustable Tool Holder 萬向動力刀座

External Coolant
外部出水

Gear Ratio 齒輪比	1:1	R.P.M. Max. 轉速最高	4,000 RPM	Rotation 轉向	
-------------------	-----	---------------------	-----------	----------------	--



Unit : mm

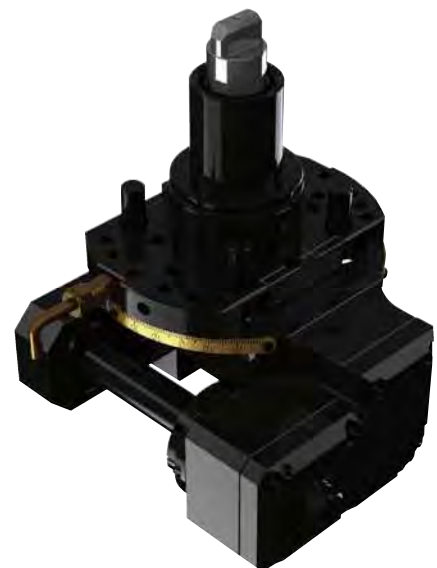
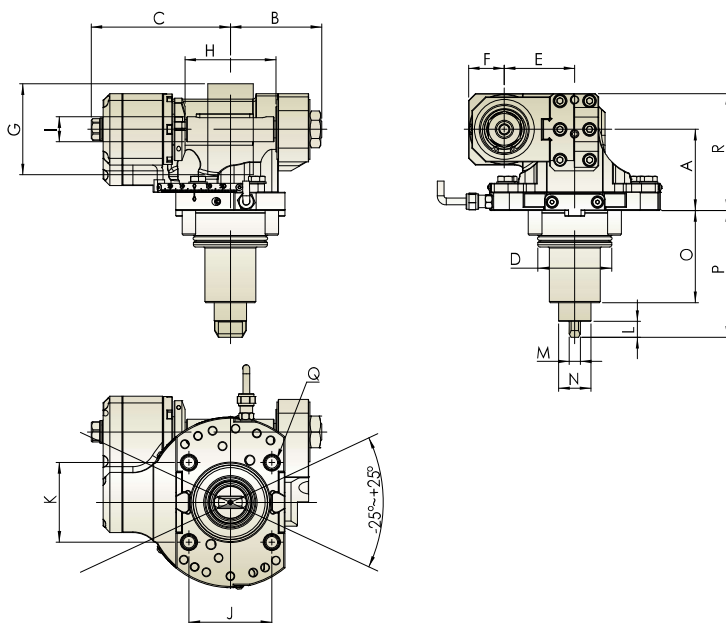
Model NO.	A	B	C max	D	E	F	G	H	I	J	K	L	M	N	O	P	Q	N.W.(KG)
THM-E09.55-55C	55	85	88	55	42	54.3	ER16(1~10)	41.5	64	64	85	10	8	28	75	103.5	M10	7.7

※ 內牙扳手為選購配件，詳細規格請見 P82。 ER wrench is not included and its specification is shown on P82.

Radial Swivel Gear Hobber Tool Holder 徑向擺動滾齒動力刀座

External Coolant
外部出水

Gear Ratio 齒輪比	1:0.5	R.P.M. Max. 轉速最高	4,000 RPM	Rotation 轉向	
-------------------	-------	---------------------	-----------	----------------	--



Unit : mm

Model NO.	A	B	C	D	E	F	G	H	I	J	K	L	M	N	O	P	Q	R	N.W.(KG)
THM-R30.71.5-65CR0.5	71.5	80.5	122.5	65	62	31.5	80	80	32	73	70	14	10	28	81	111.5	M12	103	10.4

Driven & Static Tool Holder



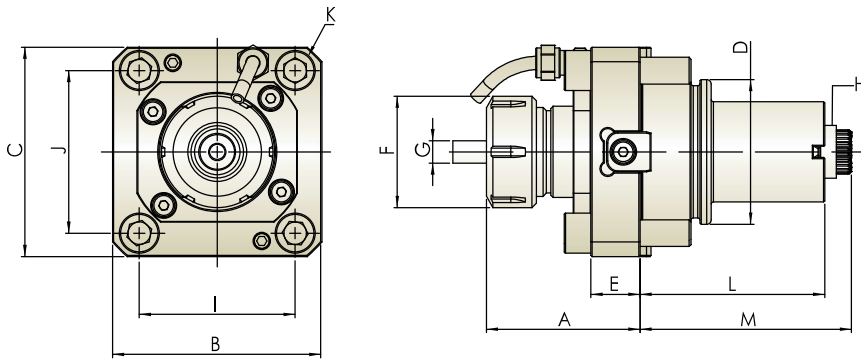
Axial Tool Holder 軸向動力刀座

External Coolant
外部出水

R.P.M. Max. 6,000 RPM
 Rotation 轉向
 IN OUT

DIN 5480

- Driven Coupling is according to DIN 5480.
- ER Collet is according to DIN 6499.
- 傳動軸為DIN 5480
- 輸出軸筒夾為DIN 6499



Unit : mm

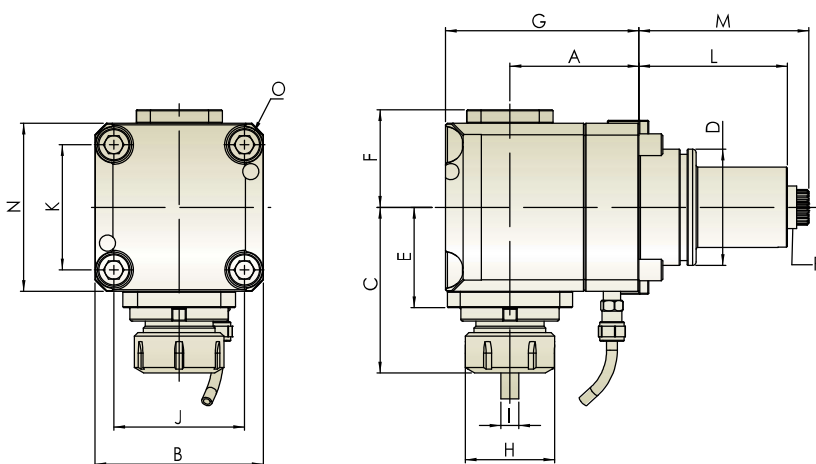
Model NO.	A max	B	C	D	E	F	G	H	I	J	K	L	M	N.W.(KG)
THM-A05-65B	69	93.5	94	65	22	50	ER32(3~20)	W20*0.8	70	73	M12	83	95	3.4

Radial Tool Holder 徑向動力刀座

External Coolant
外部出水

Gear Ratio 齒輪比 1 : 1
 R.P.M. Max. 4,000 RPM
 Rotation 轉向
 IN OUT

DIN 5480



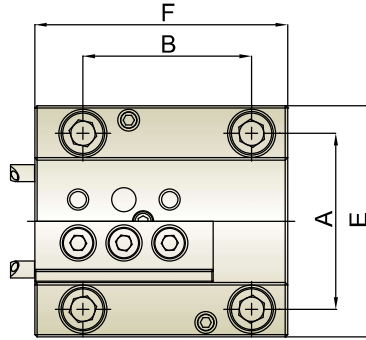
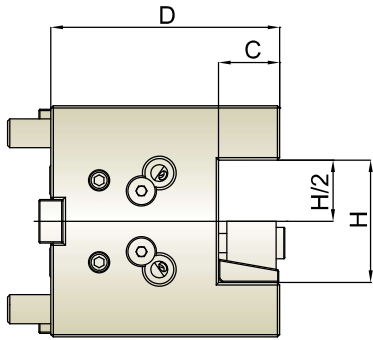
Unit : mm

Model NO.	A	B	C max	D	E	F	G	H	I	J	K	L	M	N	O	P	N.W.(KG)
THM-B05.72-65B	72	94	92.5	65	56	54.5	108	50	ER32(3~20)	73	70	83	95	94	M12	W20*0.8	8.3

Driven & Static Tool Holder



Face and ID Tool Holder B1 & B2 端面内徑刀座 B1 & B2

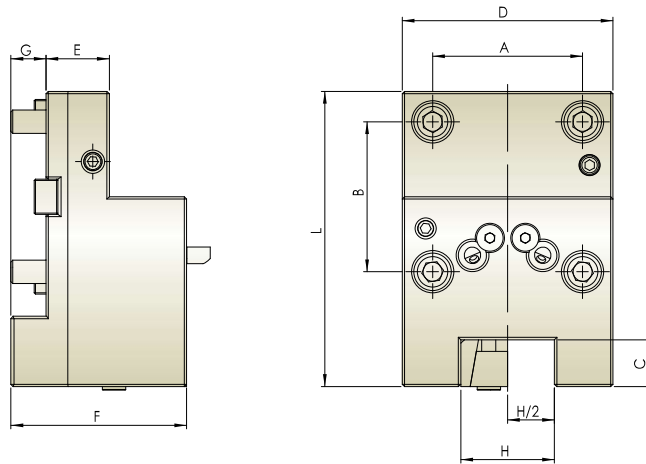


Unit : mm

Model No.	A	B	C	D	E	F	H	H/2	N.W.(KG)
THL-DLN-B1-4519.05	58	58	19.05	65	75	87	38.1	19.05	3
THL-DLN-B1-4520	58	58	20	65	75	87	40	20	2.9
THL-DPM-B1-5519.05	64	64	19.05	90	90	100	38.1	19.05	5.5
THL-DPM-B1-5520	64	64	20	90	90	100	40	20	5.5
THL-DPM-B1-5525	64	64	25	90	90	100	50	25	5.3
THL-DPM-B1-5525.4	64	64	25.4	90	90	100	50.8	25.4	5.2
THL-DPM-B1-6519.05	73	70	19.05	95	96	105	38.1	19.05	6.8
THL-DPM-B1-6520	73	70	20	95	96	105	40	20	6.7
THL-DPM-B1-6525	73	70	25	95	96	105	50	25	6.5
THL-DPM-B1-6525.4	73	70	25.4	95	96	105	50.8	25.4	6.4
THL-DPM-B1-7525	90	90	25	135	112	120	50	25	12.9
THL-DPM-B1-7525.4	90	90	25.4	135	112	120	50.8	25.4	12.9
THL-DPM-B1-7531.75	90	90	31.75	135	112	120	63.5	31.75	12.6
THL-DPM-B1-7532	90	90	32	135	112	120	64	32	12.5
THL-DPM-B1-8532	100	100	32	142	125	125	64	32	15.3
THL-DPM-B2-7525	90	90	25	50	112	135	50	25	4.8
THL-DPM-B2-7525.4	90	90	25.4	50	112	135	50.8	25.4	4.8
THL-DPM-B2-7531.75	90	90	31.75	70	112	135	63.5	31.75	6.2
THL-DPM-B2-7532	90	90	32	70	112	135	64	32	6.1



Face and OD Tool Holder C1 端面外徑刀座 C1



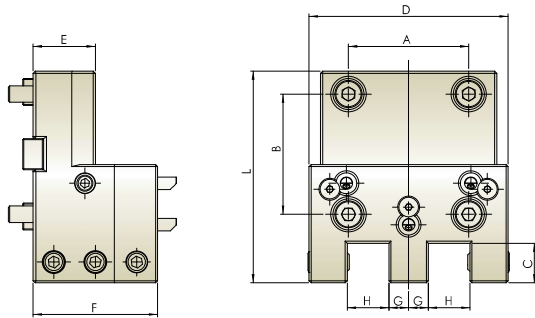
Unit : mm

Model NO.	A	B	C	D	E	F	G	H	H/2	L	N.W.(KG)
THL-DLN-C1-4519.05	58	58	19.05	75	25	65	-	38.1	19.05	102	2.5
THL-DLN-C1-4520	58	58	20	75	25	65	-	40	20	102	2.5
THL-DPM-C1-5519.05	64	64	19.05	90	27	75	15	38.1	19.05	126	4
THL-DPM-C1-5520	64	64	20	90	27	75	15	40	20	126	4.1
THL-DPM-C1-5525	64	64	25	98	27	75	15	50	25	126	4
THL-DPM-C1-5525.4	64	64	25.4	98	27	75	15	50.8	25.4	126	4.2
THL-DPM-C1-6519.05	73	70	19.05	96	30	75	-	38.1	19.05	131	5
THL-DPM-C1-6520	73	70	20	96	30	75	-	40	20	131	4.9
THL-DPM-C1-6525	73	70	25	96	30	75	-	50	25	131	4.8
THL-DPM-C1-6525.4	73	70	25.4	96	30	75	-	50.8	25.4	131	4.8
THL-DPM-C1-7525	90	90	25	112	35	80	-	50	25	145.5	7.2
THL-DPM-C1-7525.4	90	90	25.4	112	35	80	-	50.8	25.4	145.5	7.1
THL-DPM-C1-7531.75	90	90	31.75	112	35	80	-	63.5	31.75	152.5	7.4
THL-DPM-C1-7532	90	90	32	112	35	80	-	64	32	152.5	7.4
THL-DPM-C1-8532	100	100	32	125	50	100	-	64	32	165	10.8

Driven & Static Tool Holder

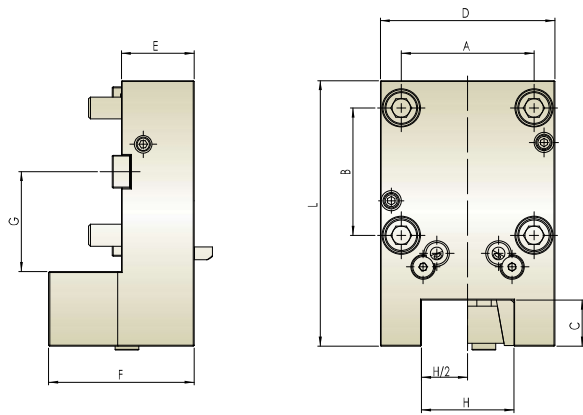


Face and OD Tool Holder C2 端面外徑刀座 C2



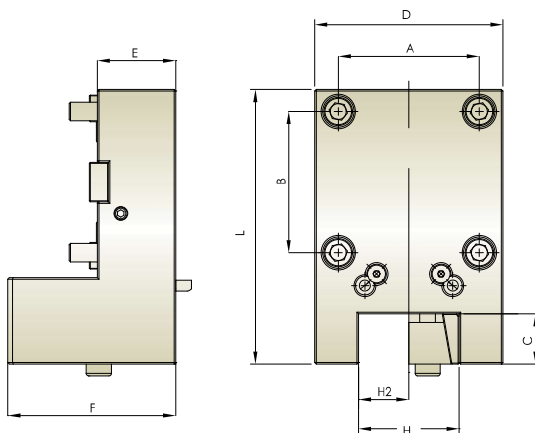
Unit : mm

Model NO.	A	B	C	D	E	F	G	H	L	N.W.(KG)
THL-DLN-C2-4519.05	58	58	19.05	96	30	60	9.525	20.05	102	3
THL-DLN-C2-4520	58	58	20	96	30	60	10	21	102	2.9



Unit : mm

Model NO.	A	B	C	D	E	F	G	H	H/2	L	N.W.(KG)
THL-DPM-C2-5525	64	64	25	90	30	69	51	50	25	137	3.3
THL-DPM-C2-5525.4	64	64	25.4	90	30	69	51	50.8	25	137	3.3
THL-DPM-C2-6525	73	70	25	96	40	80	55	50	25	146	5
THL-DPM-C2-6525.4	73	70	25.4	96	40	80	55	50.8	25.4	146	4.9
THL-VVT-C2-6525	73	70	25	96	40	80	50.5	50	25	141	4.8
THL-VVT-C2-6525.4	73	70	25.4	96	40	80	50.5	50.8	25.4	141	4.8

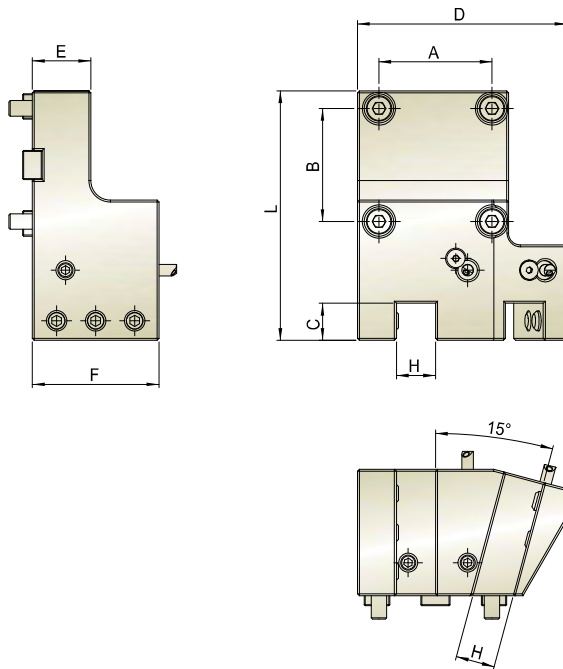


Unit : mm

Model NO.	A	B	C	D	E	F	H	H/2	L	N.W.(KG)
THL-DPM-C2-7532	90	90	32	120	50	107	64	32	175	9.9



Double Face and OD Tool Holder C3 端面外徑刀座 C3



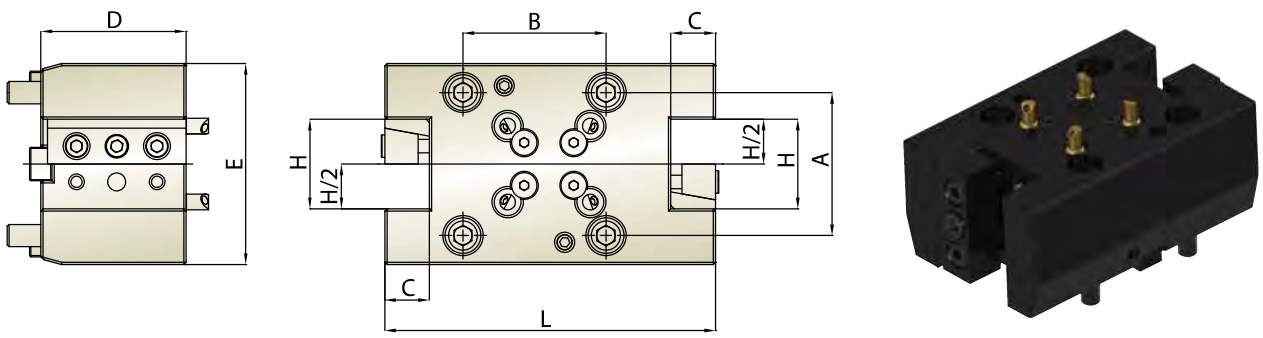
Unit : mm

Model NO.	A	B	C	D	E	F	H	L	N.W.(KG)
THL-DLN-C3-4519.05	58	58	19.05	107.5	30	65	20.05	128	3.9
THL-DLN-C3-4520	58	58	20	107.5	30	65	21	128	3.9

Driven & Static Tool Holder



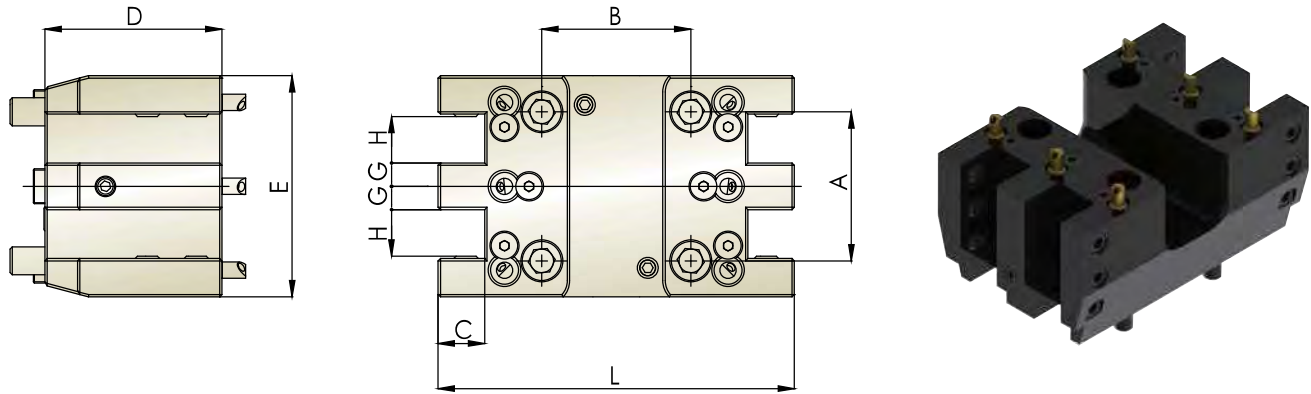
Double Face and OD Tool Holder CD1 雙刃端面外徑刀座 CD1



Unit : mm

Model NO.	A	B	C	D	E	H	H/2	L	N.W.(KG)
THL-DLN-CD1-4519.05	58	58	19.05	65	75	38.1	19.05	87	3
THL-DLN-CD1-4520	58	58	20	65	75	40	20	87	2.9
THL-DPM-CD1-5519.05	64	64	19.05	65	90	38.1	19.05	148	6.1
THL-DPM-CD1-5520	64	64	20	65	90	40	20	148	6
THL-DPM-CD1-5525	64	64	25	65	97	50	25	148	6.2
THL-DPM-CD1-5525.4	64	64	25.4	65	97	50.8	25.4	148	6.1
THL-DPM-CD1-6519.05	73	70	19.05	75	96	38.1	19.05	149	7.6
THL-DPM-CD1-6520	73	70	20	75	96	40	20	149	7.5
THL-DPM-CD1-6525	73	70	25	75	96	50	25	149	7.2
THL-DPM-CD1-6525.4	73	70	25.4	75	96	50.8	25.4	149	7.1

Quadruple Face and OD Tool Holder CD2 四刃端面外徑刀座 CD2

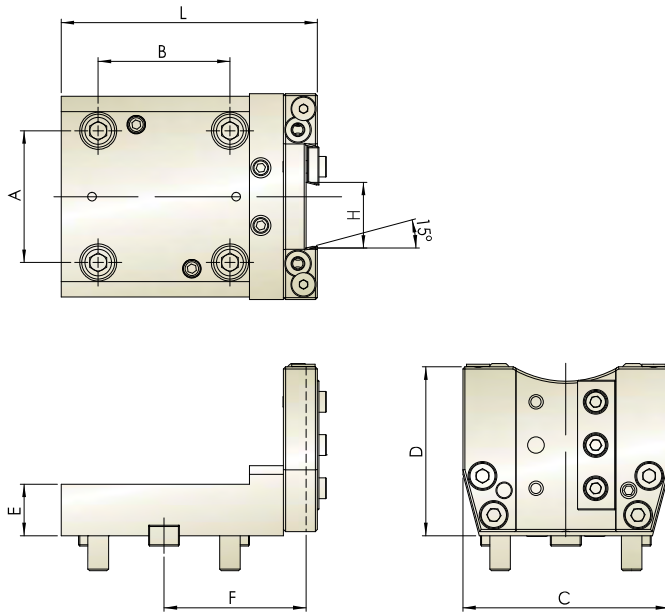


Unit : mm

Model No.	A	B	C	D	E	G	H	L	N.W.(KG)
THL-DPM-CD2-5519.05	64	64	19.05	76	95	9.525	19.05	153	6.1
THL-DPM-CD2-5520	64	64	20	76	95	10	20	153	6.1
THL-DPM-CD2-5525	64	64	25	76	105	10	25	162.5	6.4
THL-DPM-CD2-5525.4	64	64	25.4	76	105	9.525	25.4	162.5	6.4
THL-DPM-CD2-6519.05	73	70	19.05	75	96	9.525	19.05	162	8
THL-DPM-CD2-6520	73	70	20	75	96	10	20	162	8
THL-DPM-CD2-6525	73	70	25	75	122	10	25	162	9
THL-DPM-CD2-6525.4	73	70	25.4	75	122	9.525	25.4	162	9



Cut-off Tool Holder (Adjustable) H1 切斷刀座 H1

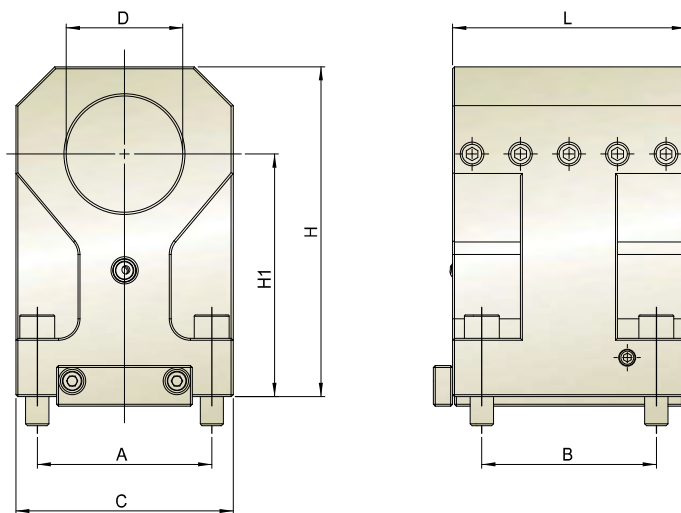


Unit : mm

Model NO.	A	B	C	D	E	F	H	L	N.W.(KG)
THL-DLN-H1-4526	58	58	100	81	25	70	26	115	2.3
THL-DPM-H1-5532	64	64	100	82	25	69	32	124.4	2.4
THL-DPM-H1-6532	73	70	100	82	25	71	32	126.4	2.5

Boring Bar Tool Holder T1 徑向內孔刀座 T1

External Coolant
外部出水



Unit : mm

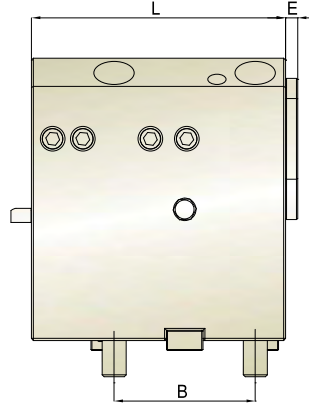
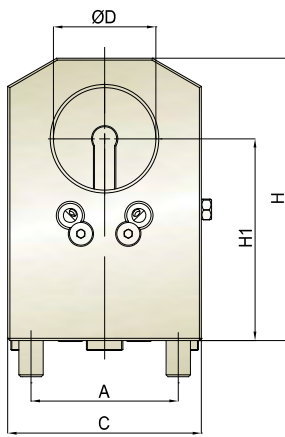
Model NO.	A	B	C	D	H	H1	L	N.W.(KG)
THL-DPM-T1-7560125	90	90	112	60	170	125	120	12.5
THL-DPM-T1-856085	100	100	125	60	130	85	125	9.2
THL-DPM-T1-8560110	100	100	125	60	155	110	125	12

Driven & Static Tool Holder



Boring Bar Tool Holder T1 徑向內孔刀座 T1

Internal Coolant
中心出水



Unit : mm

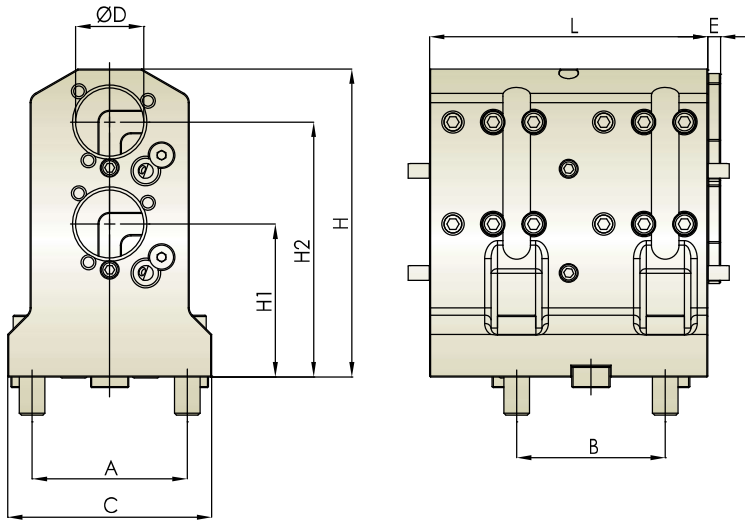
Model NO.	A	B	C	D	E	H	H1	L	N.W.(KG)
THL-DLN-T1-4531.7565-I	58	58	75	31.75	6	90	65	90	4.2
THL-DLN-T1-453265-I	58	58	75	32	6	90	65	90	4.2
THL-DPM-T1-5538.170-I	64	64	85	38.1	6	100	70	110	6
THL-DPM-T1-554070-I	64	64	85	40	6	100	70	110	6
THL-DPM-T1-6538.172-I	73	70	96	38.1	6	106	72	126	8.4
THL-DPM-T1-654072-I	73	70	96	40	6	106	72	126	8.3
THL-DPM-T1-655072-I	73	70	96	50	6	106	72	126	7.7
THL-DPM-T1-6550.872-I	73	70	96	50.8	6	106	72	126	7.5
THL-DPM-T1-6538.1100-I	73	70	96	38.1	6	140	100	126	11.5
THL-DPM-T1-6540100-I	73	70	96	40	6	140	100	126	11.5
THL-DPM-T1-6550100-I	73	70	96	50	6	140	100	126	9.9
THL-DPM-T1-6550.8100-I	73	70	96	50.8	6	140	100	126	10.8
THL-DPM-T1-7550.860-I	90	90	112	50.8	6	110	60	165	16.4
THL-DPM-T1-7560110-I	90	90	112	60	8	156	110	135	15.2
THL-DPM-T1-7563.5110-I	90	90	112	63.5	8	156	110	135	14.9

Driven & Static Tool Holder



2-Pos. Boring Bar Tool Holder T2 徑向兩孔刀座 T2

Ext./ Int.
外部 / 中心出水

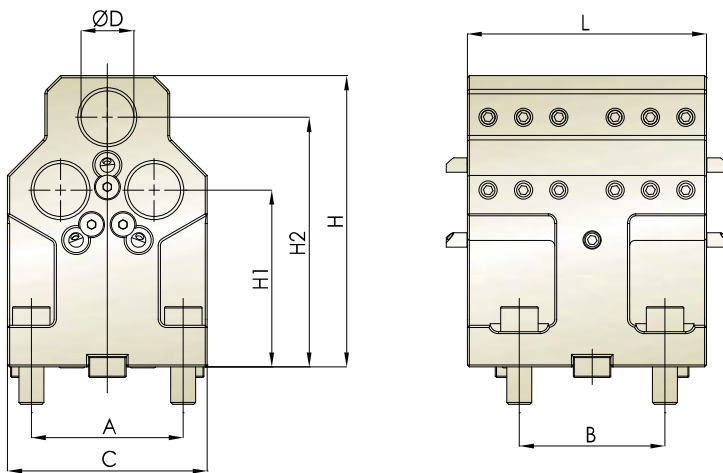


Unit : mm

Model NO.	A	B	C	D	E	H1	H2	H	L	N.W.(KG)	Coolant
THL-DLN-T2-4519.0555-I	58	58	75	19.05	5	55	100	115	90	3.8	Ext./Int.
THL-DLN-T2-452055-I	58	58	75	20	5	55	100	115	90	3.7	Ext./Int.
THL-DPM-T2-552552	64	64	85	25	-	52	97	120	115	5.5	Ext.
THL-DPM-T2-552552-I	64	64	85	25	6	52	97	120	115	5.6	Ext./Int.
THL-DPM-T2-5525.452-I	64	64	85	25.4	6	52	97	120	115	5.5	Ext./Int.
THL-DPM-T2-6531.7572-I	73	70	96	31.75	6	72	120	145	131	8.2	Ext./Int.
THL-DPM-T2-653272-I	73	70	96	32	6	72	120	145	131	8.2	Ext./Int.

3-Pos. Boring Bar Tool Holder T3 徑向三孔刀座 T3

External Coolant
外部出水



Unit : mm

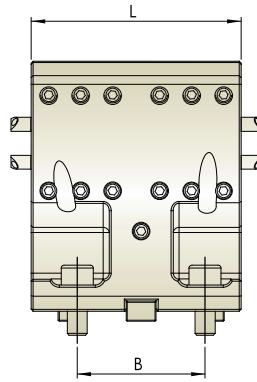
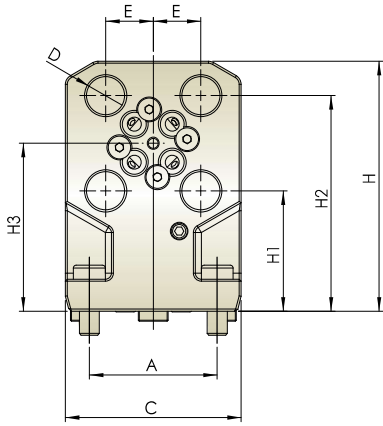
Model No.	A	B	C	D	H1	H2	H	L	N.W.(KG)
THL-DPM-T3-552570	64	64	90	25	70	102	120	115	5.6
THL-DPM-T3-5525.470	64	64	90	25.4	70	102	120	115	5.6
THL-DPM-T3-652585	73	70	116	25	85	116.75	140	115	8.6
THL-DPM-T3-6525.485	73	70	116	25.4	85	116.75	140	115	8.5

Driven & Static Tool Holder



4-Pos. Boring Bar Tool Holder T4 徑向四孔刀座 T4

External Coolant
外部出水

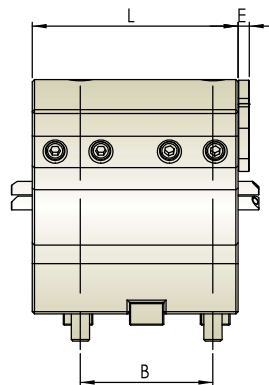
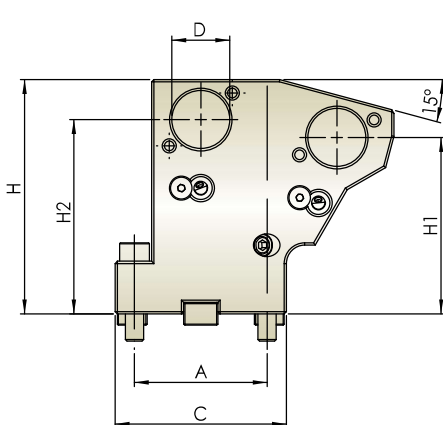


Unit : mm

Model NO.	A	B	C	D	E	H1	H2	H3	H	L	N.W.(KG)
THL-DPM-T4-5519.0584	64	64	88	19.05	23.813	60.188	107.813	84	125	105	6.3
THL-DPM-T4-552084	64	64	88	20	24	60.000	108	84	125	105	6.3
THL-DPM-T4-6519.0596	73	70	96	19.05	23.813	72.188	119.813	96	140	115	8.8
THL-DPM-T4-652096	73	70	96	20	24	72.000	120	96	140	115	8.7

2- Pos. Boring Bar Tool Holder T5 徑向兩孔刀座 -T5

Internal Coolant
內部出水



Unit : mm

Model NO.	A	B	C	D	E	H1	H2	H	L	N.W.(KG)
THL-DLN-T5-452585-I	58	58	75	25	5	77.163	85	102.5	90	4.8
THL-DLN-T5-4525.485-I	58	58	75	25.4	5	77.163	85	102.5	90	4.8

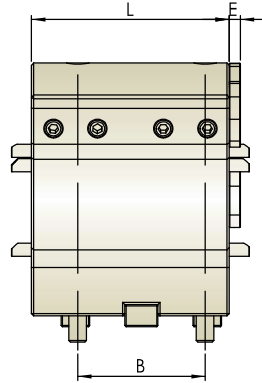
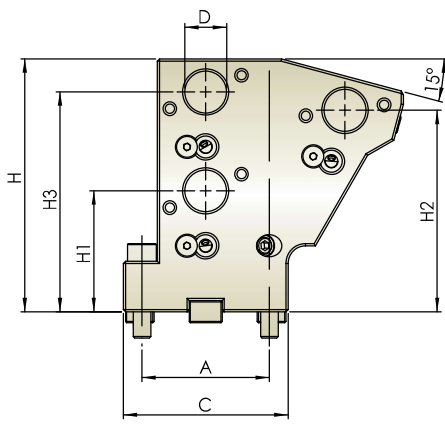
Driven & Static Tool Holder



KOREAN BMT

3- Pos. Boring Bar Tool Holder T7 徑向三孔刀座 -T7

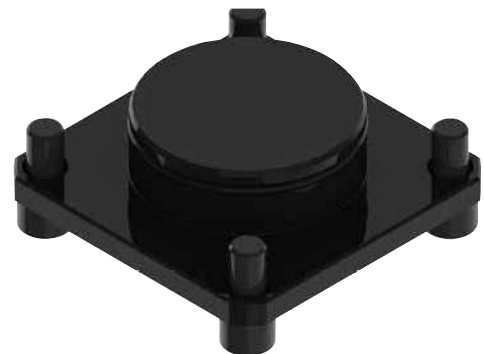
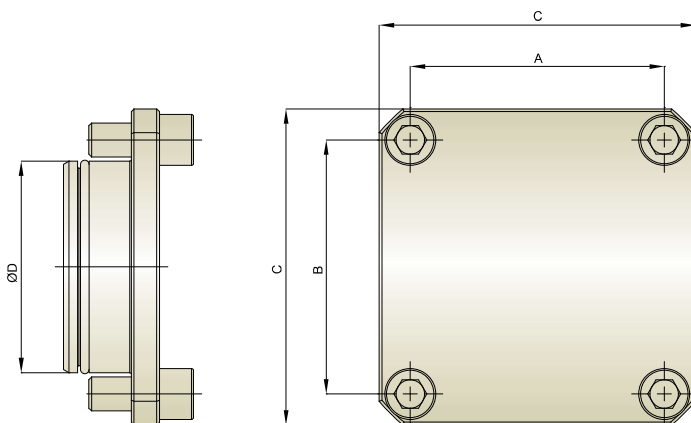
Internal Coolant
內部出水



Unit : mm

Model NO.	A	B	C	D	E	H1	H2	H3	H	L	N.W.(KG)
THL-DLN-T7-4519.0555-I	58	58	75	19.05	5	55	91.652	100	115	90	5.8
THL-DLN-T7-452055-I	58	58	75	20	5	55	91.652	100	115	90	5.8

Plug Z1 防塵蓋 Z1



Unit : mm

Model No.	A	B	C	D	N.W. (KG)
THL-DPM-Z1-55	64	64	85	55	1.1
THL-DPM-Z1-65	73	70	94	65	1.4
THL-DPM-Z1-75	90	90	112	75	1.9
THL-DPM-Z1-85	100	100	125	85	2.4

